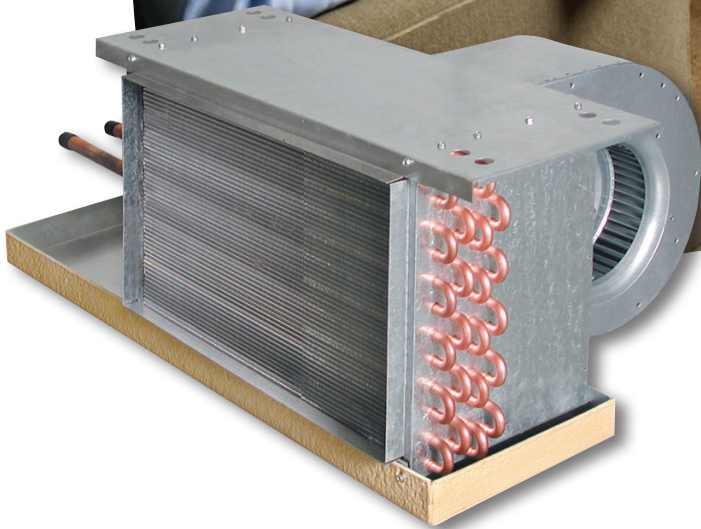


HP Fan-Coil Units High-Performance, Horizontal

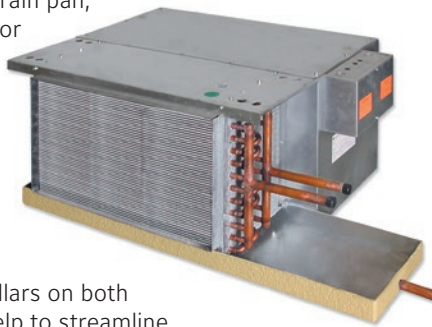


HP Series Fan-Coil Units: Innovative Design Simplifies Installation and Service

Contractors

HP Series horizontal, high-performance, fan-coil units provide maximum performance while reducing installed cost to the contractor. Concealed models feature field-reversible coil and drain pan, allowing right-hand or left-hand piping connections.

The HPP unit is also equipped with a field-reversible rear-ducted or bottom-ducted air return. Standard 1" minimum duct collars on both supply and return help to streamline ductwork installation.



Model HPP

Designers

The HP unit's array of options and number of available sizes render unparalleled flexibility. Ranging from 600 to 2400 CFM, eight unit sizes allow the HP to accurately match the room-load requirements. Available with chilled-water or DX cooling coils and hot-water, steam or electric heating coils. HP Series fan coils produce the ultimate in comfort and flexibility.

Owners

AHRI Standard 440 certification ensures exacting performance. Concerned about maintenance and Indoor Air Quality? Sloped drain pans are standard on HP Series fan coils. Both the drain pan and motor-blower assembly may be easily removed from the unit via rear or bottom panel. The entering side of the coil may be accessed by removing the blower assembly.

HP Series Fan-Coil Unit Features

STANDARD FEATURES:

- Compact size: 17" height (HPF/HPP) or 18" height (HPE) for all sizes
- Heavy-gauge, galvanized-steel casing construction
- 1/2"-thick fiberglass insulation
- Side-access electrical enclosure
- Sloped drain pan, externally insulated
 - Field-reversible for left or right connections
- Removable fan assembly
- 2 or 4-pipe configuration, preheat or reheat position
 - Field-reversible for left or right connections (water coils)
 - Manual air vents
 - 3, 4, or 6-row chilled water or DX, heat-pump compatible
 - 1, 2, 3 or 4-row hot water or 1 or 2-row steam
- 1" throwaway filters
- Three-tap PSC motors; 115, 208-230, or 277 volts
- ETL-listed and labeled
- AHRI Standard 440-certified

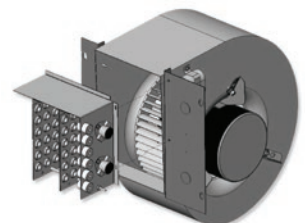
OPTIONAL FEATURES:

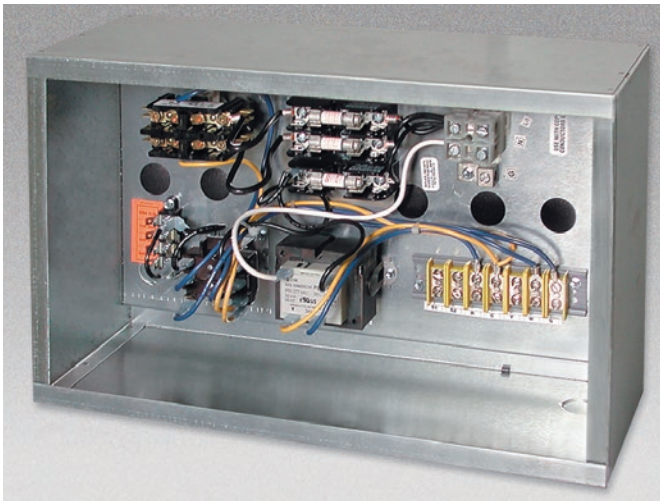
- Insulated plenum, rear-ducted or bottom-ducted return (Model HPP)
 - Field-reversible
- Mixing box with linkage
- Damper actuator
- Foil-faced insulation
- Closed-cell foam insulation
- Stainless-steel drain pan
- Stainless-steel coil casings
- Secondary drain connection
- Auxiliary drip pan – stainless-steel or galvanized
- Condensate-overflow switch
- Auto air vents
- 1" or 2" pleated filter
- ECM™ motors
- SCR fan speed controller (PSC motor)
- Piping packages
- Thermostats
- Double-deflection discharge grille (Model HPE)



Electric Heat

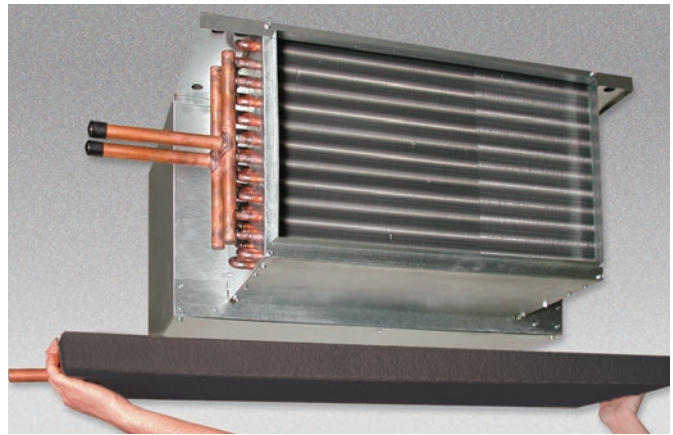
Available in a wide variety of kW and voltage configurations. Options include door-interlock disconnects and low-voltage controls. All control and electric-heat configurations are with single-point power connection and are ETL-listed as an assembly.





Electrical Enclosure

The side-access electrical enclosure provides access to all electric heat and control components. Terminal strips are furnished for simple power-wiring and control-wiring connections. Multiple knockouts allow wiring entries from either side of the compartment.



Drain Pan

Standard drain pans are externally insulated, single-wall, galvanized-steel, with an option for stainless-steel. Drain pans are available with secondary-drain connection. On concealed models, the HP Series drain pan is easily removable for cleaning or reversing connections.



Mixing Box

The optional, fully insulated, mixing-box section comes completely assembled to the HPP unit, featuring low-leakage, heavy-gauge steel dampers with integral linkage. Damper positioning is field-configurable and bottom filter access is standard. A factory-provided and factory-installed damper actuator is also available.



Filters

One-inch throwaway filters are tight-fitting to prevent air bypass. Filters are easily removable from the bottom without the need for tools. The filter rack is convertible from rear to bottom return without the need for additional parts. Optional 1" and 2" pleated filters are available for use with the HPP unit.

Powder Coated Painted Surface

Exposed cabinet Model HPE features powder coat finish that resists scuffing, scratching, fading, and fingerprints.

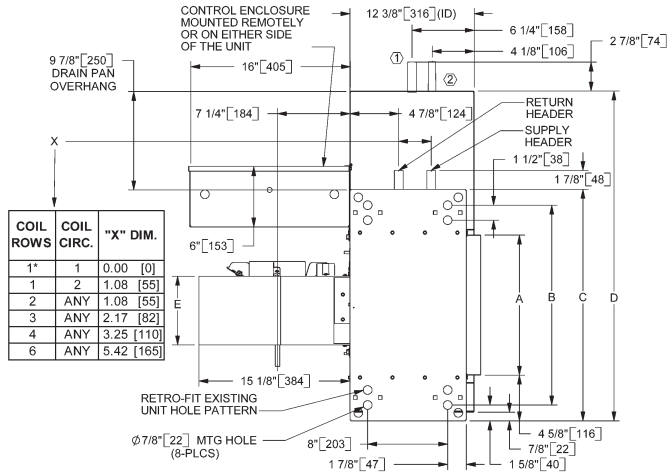


Coils

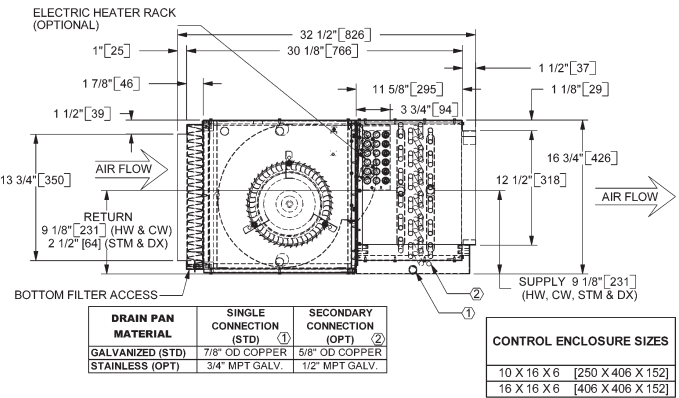
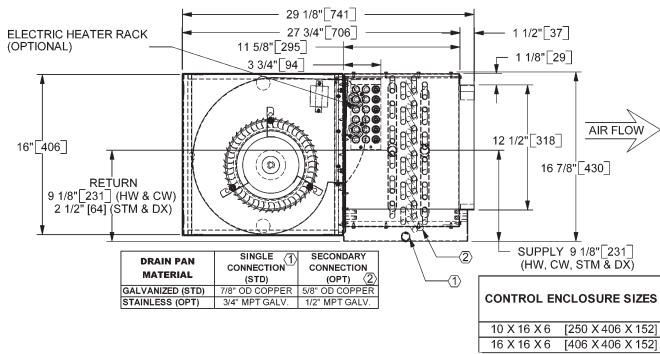
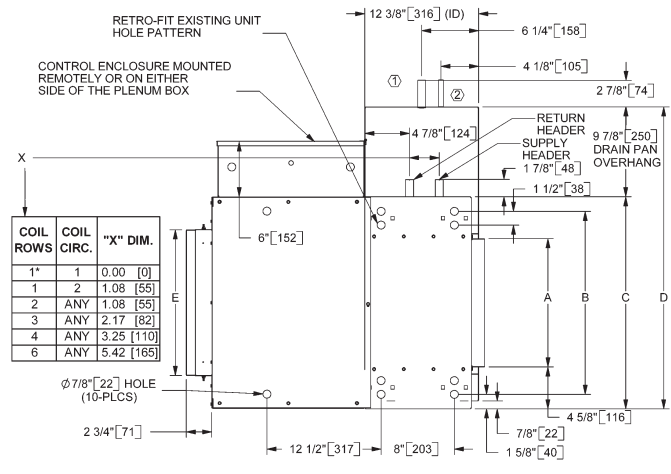
All fan-coil units are available in 2 or 4-pipe configurations. The heating coil may be placed in the reheat or preheat position. Heating and cooling coils are field-reversible for right-hand or left-hand connections.



Model HPF Free-Return Dimensional Data



Model HPP Plenum-Return Dimensional Data



UNIT SIZE	FAN QTY	A	B	C	D	E
06	1	14	20	23 1/8	34	6 7/8
		[356]	[508]	[587]	[864]	[175]
08	1	19	25	28 1/8	39	8 1/4
		[483]	[635]	[714]	[991]	[210]
10	1	23	29	32 1/8	43	8 1/4
		[584]	[737]	[816]	[1092]	[210]
12	2	28	34	37 1/8	48	6 7/8
		[711]	[864]	[943]	[1219]	[175]
14	2	33	39	42 1/8	53	8 1/4
		[838]	[991]	[1070]	[1346]	[210]
16	2	38	44	47 1/8	58	8 1/4
		[965]	[1118]	[1197]	[1473]	[210]
18	2	43	49	52 1/8	63	8 1/4
		[1092]	[1245]	[1324]	[1600]	[210]
20	2	47	53	56 1/8	67	8 1/4
		[1194]	[1346]	[1426]	[1702]	[210]

UNIT SIZE	FAN QTY	A	B	C	D	E
06	1	14	20	23 1/8	34	16
		[356]	[508]	[587]	[864]	[406]
08	1	19	25	28 1/8	39	19 7/8
		[483]	[635]	[714]	[991]	[505]
10	1	23	29	32 1/8	43	25 7/8
		[584]	[737]	[816]	[1092]	[657]
12	2	28	34	37 1/8	48	32
		[711]	[864]	[943]	[1219]	[813]
14	2	33	39	42 1/8	53	35 7/8
		[838]	[991]	[1070]	[1346]	[911]
16	2	38	44	47 1/8	58	39 7/8
		[965]	[1118]	[1197]	[1473]	[1013]
18	2	43	49	52 1/8	63	44 7/8
		[1092]	[1245]	[1324]	[1600]	[1140]
20	2	47	53	56 1/8	67	49 7/8
		[1194]	[1346]	[1426]	[1702]	[1267]

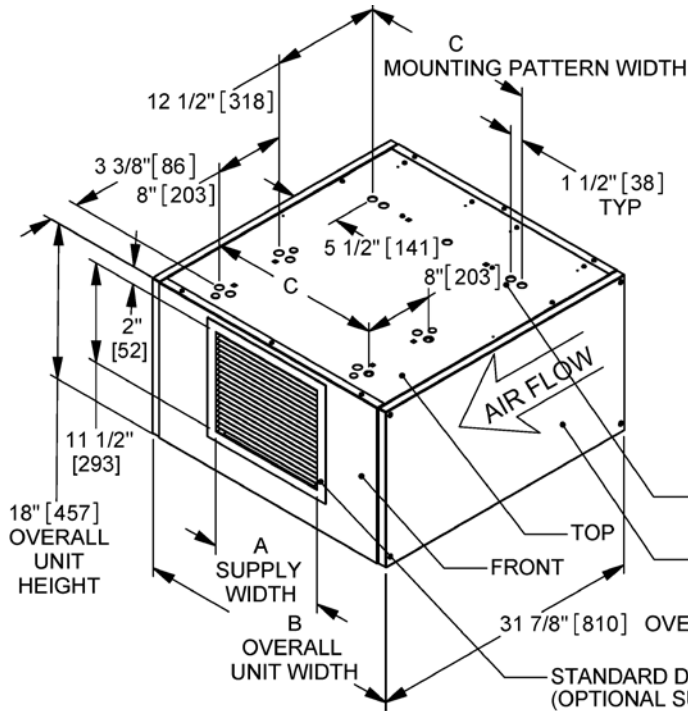
Notes:

- All dimensions are in inches [mm] and are +/- 1/8" [3 mm]. Metric values are soft conversions.
- See submittal for specific unit dimensions, options and specifications.
- * 1-row, single-circuit coils are on the same axis, but are 13-3/4" apart in height.
- Control-enclosure size is determined by electrical components selected.

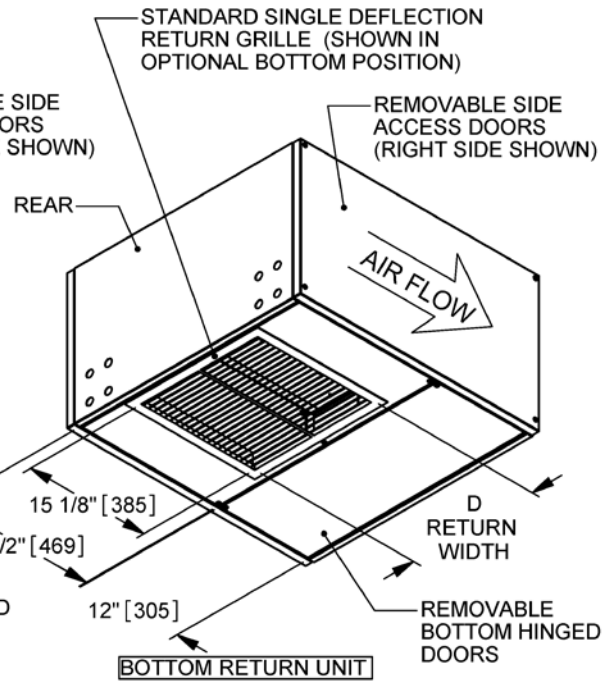
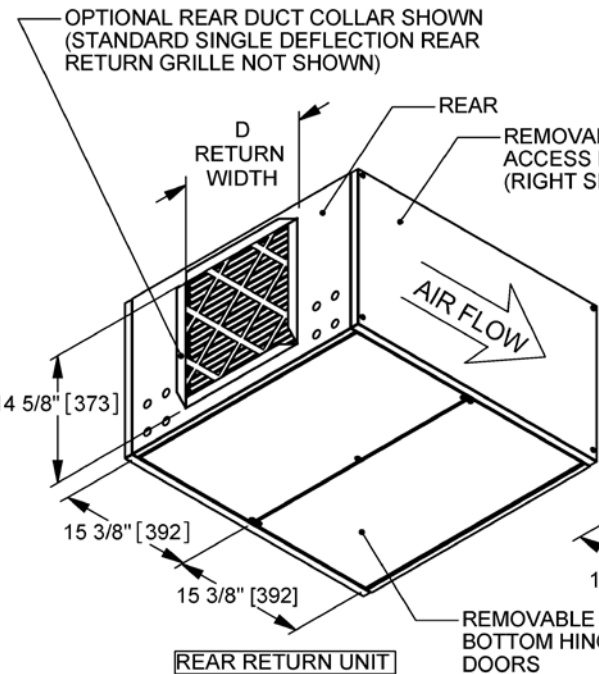
- Drain pan is field-reversible 180° and externally insulated.
- Optional auxiliary drip pan available for piping-package condensate.
- Coil hand is field-reversible (left-hand unit shown).
- Plenum box is field-reversible for rear- or bottom-return air.
- Filter rack can accommodate standard 1" throwaway and 1" & 2" pleated filters.

Note: Drawings are not to scale and are not for installation purposes. Refer to www.enviro-tec.com for current submittal drawings. All data and dimensions are subject to change without notice.

Model HPE Exposed-Cabinet Dimensional Data



Unit Size	A	B	C	D
06	13 1/2	31 1/4	20	15 1/2
	[343]	[794]	[508]	[394]
08	18 1/2	36 1/4	25	19 1/2
	[470]	[921]	[635]	[495]
10	22 1/2	40 1/4	29	24 1/2
	[572]	[1022]	[737]	[622]
12	27 1/2	45 1/4	34	31 1/2
	[699]	[1149]	[864]	[800]
14	32 1/2	50 1/4	39	35 1/2
	[826]	[1276]	[991]	[902]
16	37 1/2	55 1/4	44	39 1/2
	[953]	[1403]	[1118]	[1003]
18	42 1/2	60 1/4	49	44 1/2
	[1080]	[1530]	[1245]	[1130]
20	46 1/2	64 1/4	53	49 1/2
	[1181]	[1632]	[1346]	[1257]



- NOTES:**
1. ALL DIMENSIONS ARE IN INCHES [mm] AND ARE +/- 1/8"
 2. SEE FNF SUBMITTAL FOR ADDITIONAL FN SERIES PRODUCT DIMENSIONS NOT SHOWN
 3. INTERNAL HINGED ELECTRICAL ENCLOSURE NOT SHOWN
 4. OPTIONAL 1" OR 2" PLEATED FILTERS AVAILABLE (SHOWN) STANDARD 1" THROWAWAY FILTER NOT SHOWN
 5. 1-1/4" DUCT COLLAR STANDARD ON ALL DUCTED UNITS
 6. PROVIDE ACCESS CLEARANCE FOR ELECTRICAL ENCLOSURE PER LOCAL AND NATIONAL ELECTRICAL CODE REQUIREMENTS (MIN. 36 INCHES).
 7. IT IS RECOMMENDED TO PROVIDE 3' ACCESS ON PIPE CONNECTION SIDE.
 8. CONTROL ENCLOSURE HANDING IS ON THE OPPOSITE SIDE OF THE COIL CONNECTION.

INTERNAL CONTROL ENCLOSURE SIZES	
SIZE DETERMINED BY SELECTED COMPONENTS	
10 X 16 X 6	[250 X 406 X 152]
10 X 20 X 6	[250 X 500 X 152]

Note: Drawings are not to scale and are not for installation purposes. Refer to www.enviro-tec.com for current submittal drawings. All data and dimensions are subject to change without notice.

AHRI Standard Ratings

(80/67°F EAT, 45°F EWT, 10°F temp rise, hi-speed)

Model/Size	Ari 440 Certified	Coil		Airflow Cfm (Dry Flow)	Cooling Capacity		Water		Power Input (Watts)
		Rows	FPI		OT (BTUH)	OS (BTUH)	Flow Rate GPM	WPD ft-wg	
HPF/HPP 06	*	4	10	700	17800	14000	3.7	1.6	290
HPF/HPP 08	*	4	10	900	23500	18500	4.9	1.9	410
HPF/HPP 10	*	4	10	1100	29400	22900	6.0	2.2	470
HPF/HPP 12	*	4	10	1400	43000	31800	8.7	4.2	560
HPF/HPP 14		4	10	1750	47100	36250	9.6	3.0	715
HPF/HPP 16		4	10	2000	51000	41000	10.5	2.0	830
HPF/HPP 18		4	10	2200	53000	42000	11.0	2.2	850
HPF/HPP 20		4	10	2300	56000	44000	11.4	2.5	870

Note:

- All testing done with dry coil, 0.05" ESP, PSC 115/1/60 motor.
- Airflow CFM on sizes 14 through 20 exceed maximum ratings in AHRI Standard 440 and are, therefore, not certified.

Heating Capacity

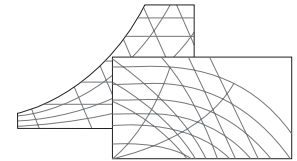
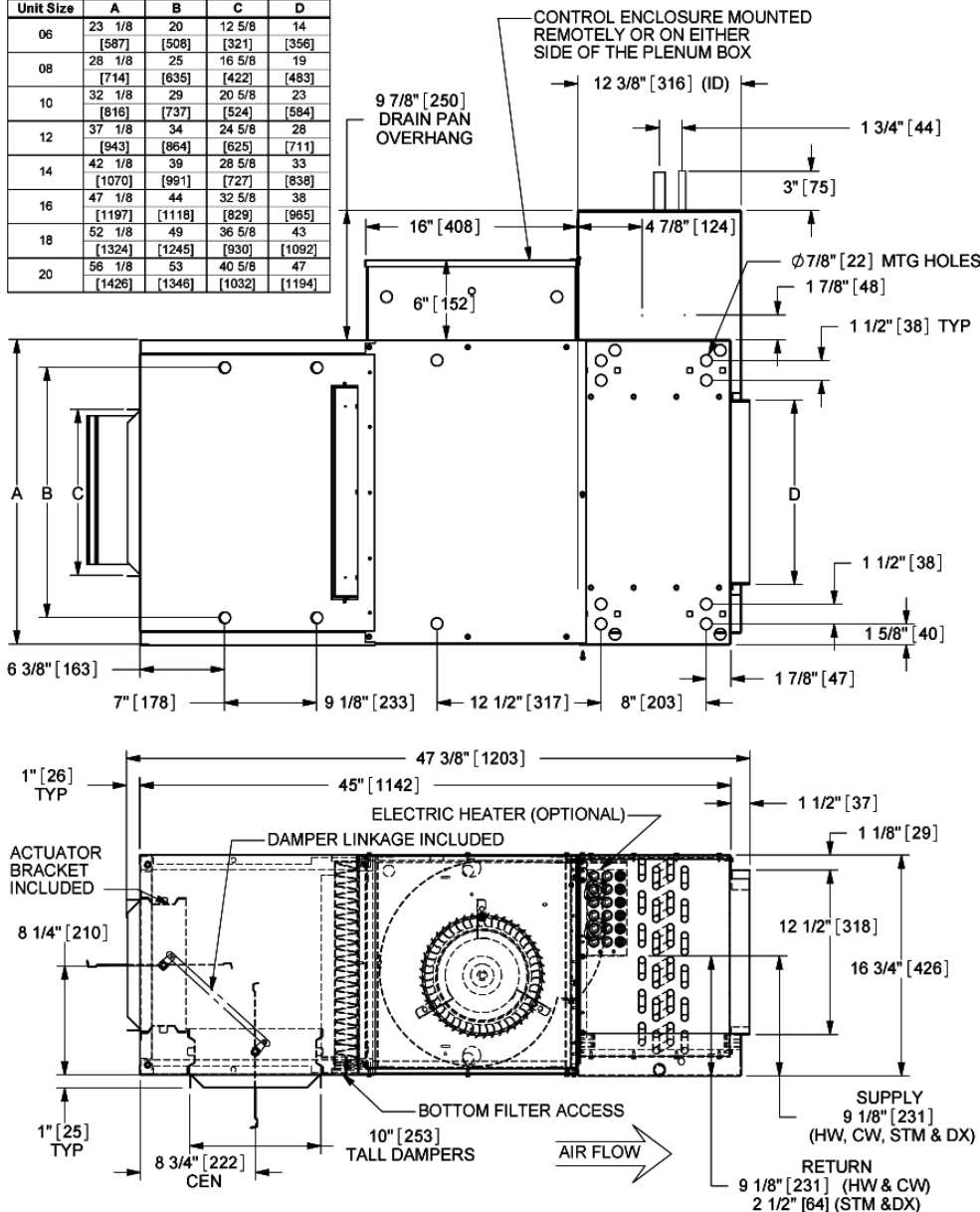
(70°F EAT, 180°F EWT, 40°F temp drop, hi-speed)

Unit Type	Unit Size	Nom. Cfm	1 Row			2 Row			3 Row			4 Row		
			OS (MBH)	GPM	WPD	OS (MBH)	GPM	WPD	OS (MBH)	GPM	WPD	OS (MBH)	GPM	WPD
HPF HPP	06	600	17.5	0.9	1.6	30.2	1.5	1.4	41.7	2.1	1.0	48.3	2.5	0.9
	08	800	24.3	1.2	3.2	41.8	2.1	2.6	57.6	2.9	2.0	66.5	3.4	1.6
	10	1000	27.8	1.4	0.8	52.4	2.7	4.1	70.5	3.6	1.5	80.6	4.1	1.0
	12	1200	34.5	1.8	0.9	61.8	3.2	1.8	86.4	4.4	2.3	98.8	5.1	1.6
	14	1400	41.3	2.1	1.7	73.4	3.8	2.6	98.6	5.0	1.4	117.1	6.0	1.8
	16	1600	48.1	2.5	2.4	85.1	4.4	3.6	114.5	5.9	1.9	126.5	6.5	0.6
	18	1800	54.9	2.8	3.2	96.8	5.0	4.9	130.4	6.7	2.5	144.7	7.4	0.7
	20	2000	61.0	3.1	4.1	107.5	5.5	6.1	145.3	7.4	2.4	161.7	8.3	0.9

- Model HPE performance data varies from HPF and HPP units. Please use Web-Select® at www.enviro-tec.com for HPE data.

Model HPM With Mixing Box Dimensional Data

Unit Size	A	B	C	D
06	23 1/8 [587]	20 [508]	12 5/8 [321]	14 [356]
08	28 1/8 [714]	25 [635]	16 5/8 [422]	19 [483]
10	32 1/8 [816]	29 [737]	20 5/8 [524]	23 [584]
12	37 1/8 [943]	34 [864]	24 5/8 [625]	28 [711]
14	42 1/8 [1070]	39 [991]	28 5/8 [727]	33 [838]
16	47 1/8 [1197]	44 [1118]	32 5/8 [829]	38 [965]
18	52 1/8 [1324]	49 [1245]	36 5/8 [930]	43 [1092]
20	56 1/8 [1426]	53 [1346]	40 5/8 [1032]	47 [1194]



Visit www.enviro-tec.com for catalog, guide specifications, submittal drawings, and Web-Select® online selection program.

Visit www.enviro-tec.com for catalog, guide specifications, submittal drawings, and Web-Select® online selection program.

Notes:

- All dimensions are in inches [mm] and are +/- 1/8" [3 mm]. Metric values are soft conversions.
- See HPP submittal for additional HP series product dimensions not shown.
- The mixing box is field-reversible from bottom & rear to top & rear return.
- Mixing-box side panels are removable for access to the linkage/actuator.

Note: Drawings are not to scale and are not for installation purposes. Refer to www.enviro-tec.com for current submittal drawings. All data and dimensions are subject to change without notice.

ENVIRO-TEC is a registered trademark of Johnson Controls, Inc. in the United States of America and other countries. Other trademarks used herein may be trademarks or registered trademarks of other companies.

PUBL-5415 (715) Supersedes PUBL-5415 (808)
© 2015 Johnson Controls, Inc. P.O. Box 423, Milwaukee, WI 53201 Printed in USA
www.enviro-tec.com

