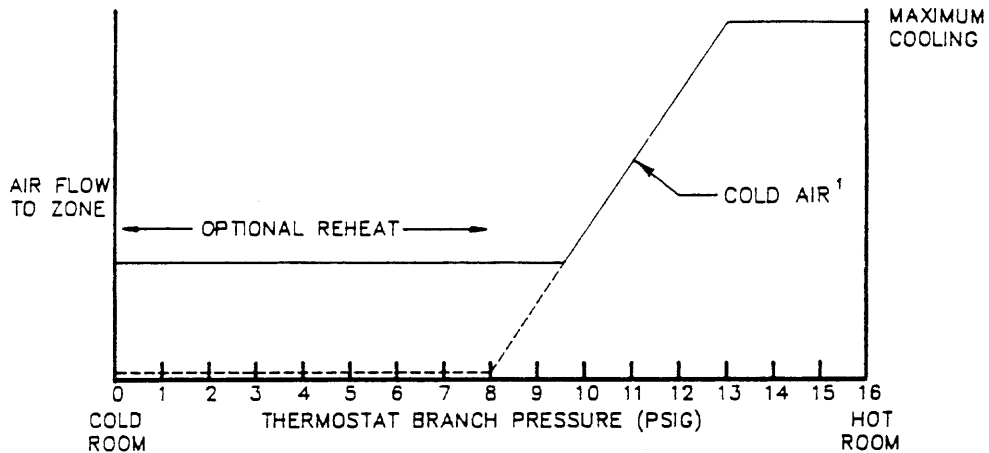
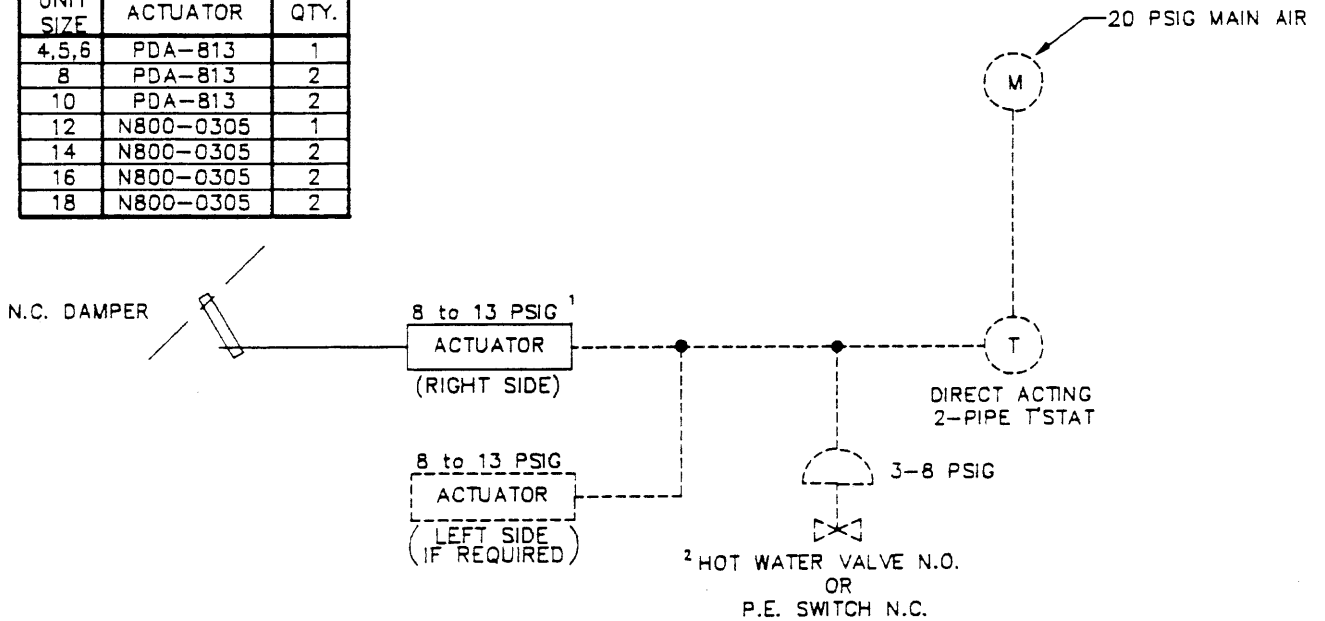


# ENVIRO-TEC™ SUBMITTAL DATA

This control sequence provides single duct bypass variable air volume cooling. As space temperature drops, airflow to the zone is reset from full open to the minimum airflow setpoint. The minimum airflow setpoint is field calibrated by adjusting the damper linkage. If the space temperature continues to drop at minimum airflow, the thermostat will energize an optional electric heater or hot water coil valve to provide reheat. A direct acting, two-pipe thermostat is required. Damper is normally closed.



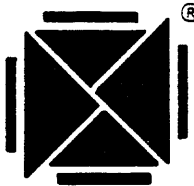
UNIT SIZE	ACTUATOR	QTY.
4,5,6	PDA-813	1
8	PDA-813	2
10	PDA-813	2
12	N800-0305	1
14	N800-0305	2
16	N800-0305	2
18	N800-0305	2



<sup>1</sup> NOMINAL RESET RANGE. ACTUAL RANGE VARIES WITH LOAD.

<sup>2</sup> HOT WATER VALVE SUPPLIED BY OTHERS; P.E. SWITCH IS INCLUDED IN HEATER CABINET.

— FACTORY PIPING    - - - - - FIELD PIPING



**ENVIRONMENTAL TECHNOLOGIES, A CORPORATION**

**BT007**

PRESSURE DEPENDENT

PNEUMATIC CONTROLS

DRAWN BY:	NANCE	DATE:	14 JUL 89
REV NO.:	00	REV DATE:	
APPROVED BY:	<i>SW</i>	DRAWING NO.:	<b>12887</b>