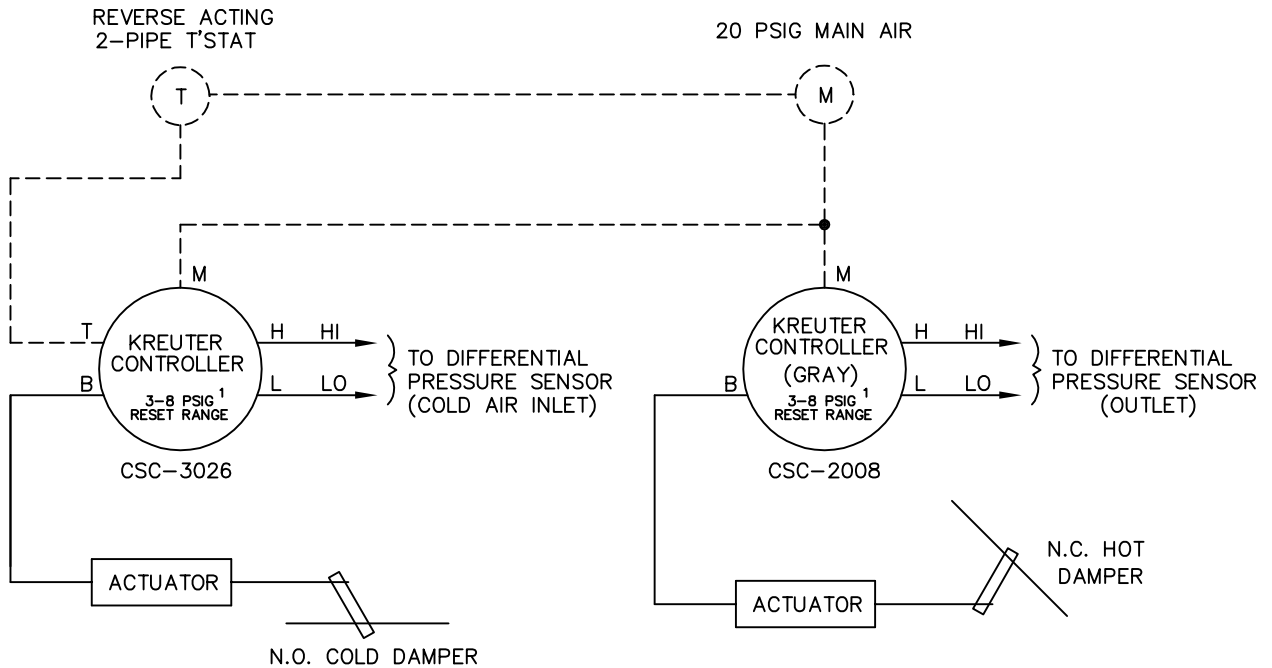
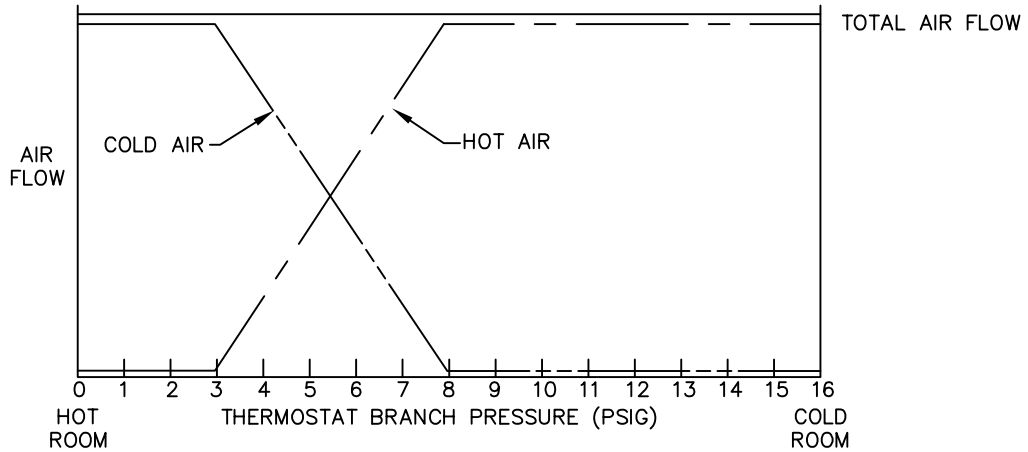


This sequence provides constant volume discharge control. A reverse acting, two-pipe thermostat is required. The cold air damper is normally open and the hot air damper is normally closed. When the space temperature is warm, the cold damper is controlling at the maximum CFM setting and the hot damper is closed. As the space temperature drops, the cold damper modulates closed as the hot damper opens. If the space temperature continues to drop, the cold damper shuts off and the hot damper controls at the maximum CFM setting.



¹ CONTROLLER REQUIRES FIELD CALIBRATION AND SET UP UNLESS OTHERWISE SPECIFIED. IF FACTORY CALIBRATION OPTION IS USED, THE RESET SPAN AND STARTPOINT WILL BE ADJUSTED AS SHOWN ABOVE UNLESS OTHERWISE SPECIFIED.

² ADJUST HOT DECK CONTROLLER FOR CONSTANT VOLUME OPERATION AT MAXIMUM AIRFLOW SETPOINT

———FACTORY PIPING - - - -FIELD PIPING
PNEUMATIC AIR CONSUMPTION 1.6 SCFH



TITLE: **DT408RC**
PRESSURE INDEPENDENT PNEUMATIC CONTROLS

DRN BY: WDD
DATE: 12/18/00

DRAWING NO.

CKD BY: WAE
DATE: 10/07/08
REV: 03

21194

THIS DRAWING CONTAINS PROPRIETARY DATA. UNAUTHORIZED DISCLOSURE, REPRODUCTION, OR USE IS STRICTLY PROHIBITED WITHOUT WRITTEN PERMISSION

UNCONTROLLED WHEN PRINTED